



File  
for rent

Place de la Navigation 14  
Post case 1256  
1001 Lausanne

[spg.ch](http://spg.ch)

GENÈVE-NYON-LAUSANNE

FAVORITE



# Beautiful detached villa with vegetable garden and fruit trees

Quartier résidentiel  
[1052 Le Mont-sur-Lausanne](#)



# Table of contents



Characteristics	P. 3
Technical data	P. 4
Description	P. 5
Pictures	P. 6
Next steps	P. 11

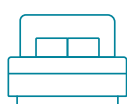


# Characteristics



**10**

Rooms



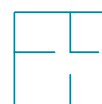
**5**

Bedrooms



**2**

Bathrooms



**160 m<sup>2</sup>**

Living area



**1**

Parking int.



**3**

Parkings ext.



**Heat pump**

Heating type

**Rent : CHF 4,950.-/month**



# Technical data

Type **Single family house**

---

Kitchen type **Furnished kitchen, Fitted kitchen**

---

Number of toilets **2**

---

Annexe rooms **Cellar, Storeroom**

---



# Description

## Detached villa with vegetable garden and fruit trees

Located in a peaceful and green residential area, just a few minutes from Lausanne, this detached villa offers a pleasant living environment.

With a living area of approximately 160 m<sup>2</sup> and a basement, it benefits from beautiful natural light and a functional layout. The carefully landscaped garden includes a vegetable garden and fruit trees (apple and pear trees), offering a privileged outdoor environment. Recent work has been carried out, including the complete renovation of the paintwork and the installation of a heat pump.

This beautiful property is as follows:

### Ground floor:

A large entrance hall, a beautiful fitted kitchen with bar and dining area, a bright living room with fireplace and access to the terrace, 3 bedrooms, a bathroom/WC.

### Lower floor:

A multipurpose room, an office, a playroom, a shower/toilet room, a laundry area with washing machines, A cellar, a technical room.

### Parking:

A closed garage and several parking spaces in front of the house.

Net rent: CHF 4,950.- + charges: individual

Garden maintenance: pruning of large trees is the responsibility of the owner, the rest is the responsibility of the tenant.

Availability: immediately, to be agreed.

If you are interested in a visit, our residential rental service is at your disposal: [location-vd@spg.ch](mailto:location-vd@spg.ch) – 058 810 37 43



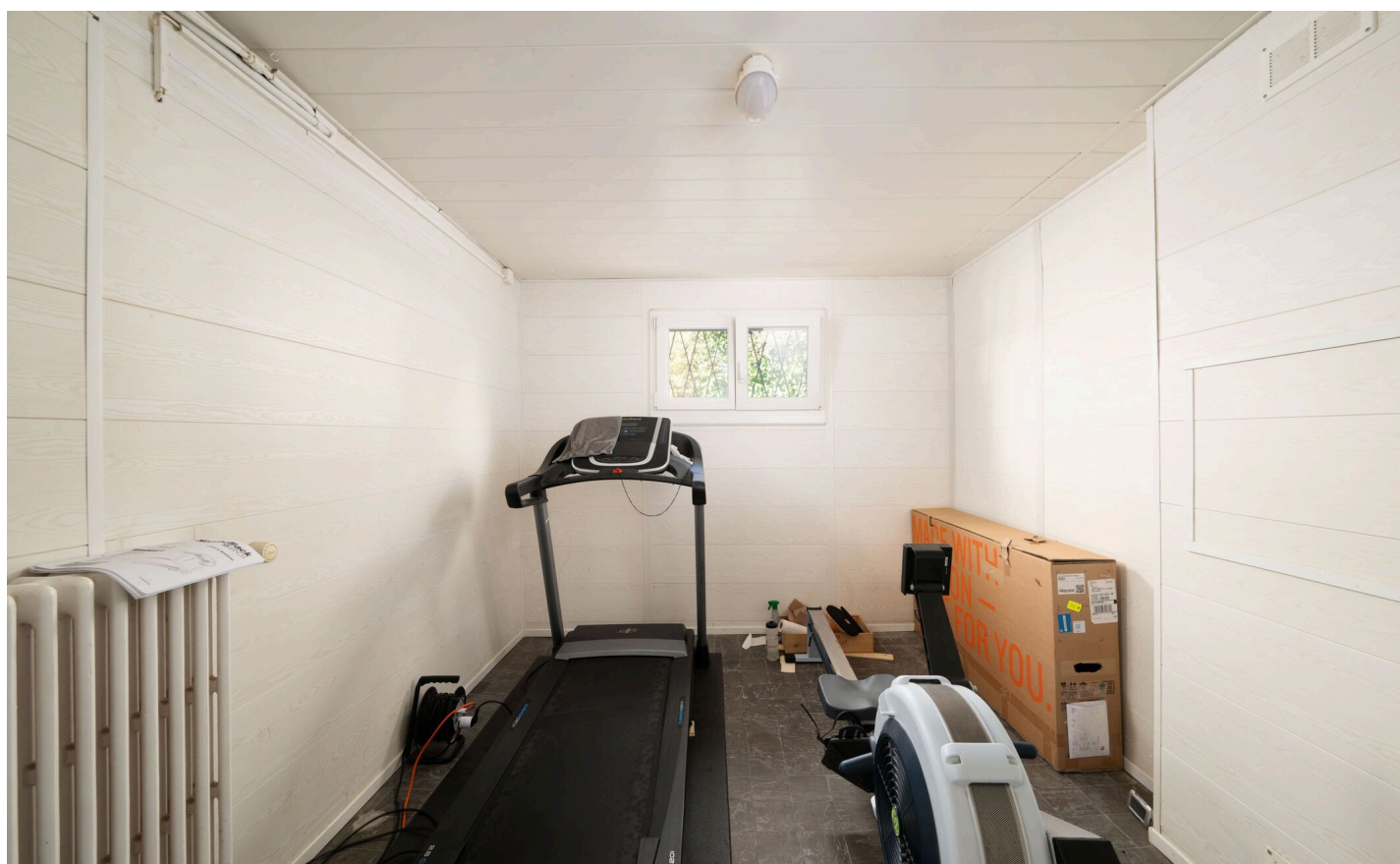


# Pictures





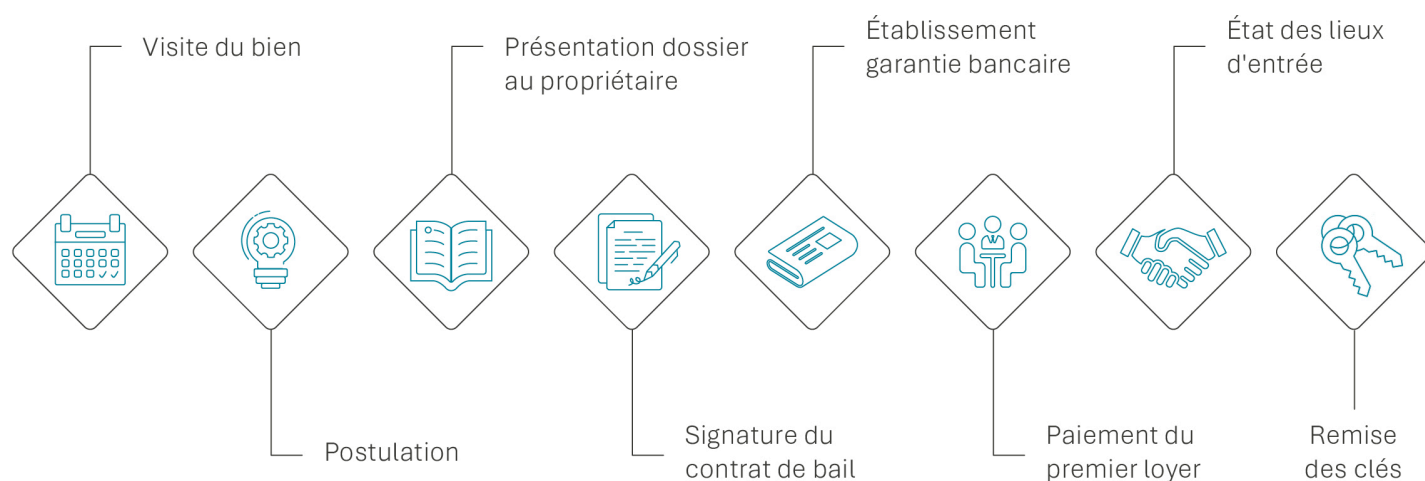








# Next steps





Jennifer Aeby

T: +41 58 810 37 43

M: +41 79 123 52 45

Jennifer.Aeby@spg.ch

**Société Privée de Gérance**

Place de la Navigation 14

Post case 1256

1001 Lausanne