



File
for rent

Place de la Navigation 14
Post case 1256
1001 Lausanne

spg.ch
GENÈVE-NYON-LAUSANNE

EXCLUSIVE OFFER



5967745

Au coeur du village
1083 Mézières VD



Table of contents



Characteristics	P. 3
Technical data	P. 4
Pictures	P. 5
Next steps	P. 11



Characteristics



5.5

Rooms



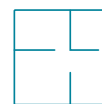
4

Bedrooms



2

Bathrooms



~ 150 m²

Living area



~ 750 m²

Ground surface



2

Parkings ext.



2022

Year of construction



Air to water heat pump

Heating type



South, East

Orientation

Rent : CHF 4,200.-/month



Technical data

Type **Single family house**

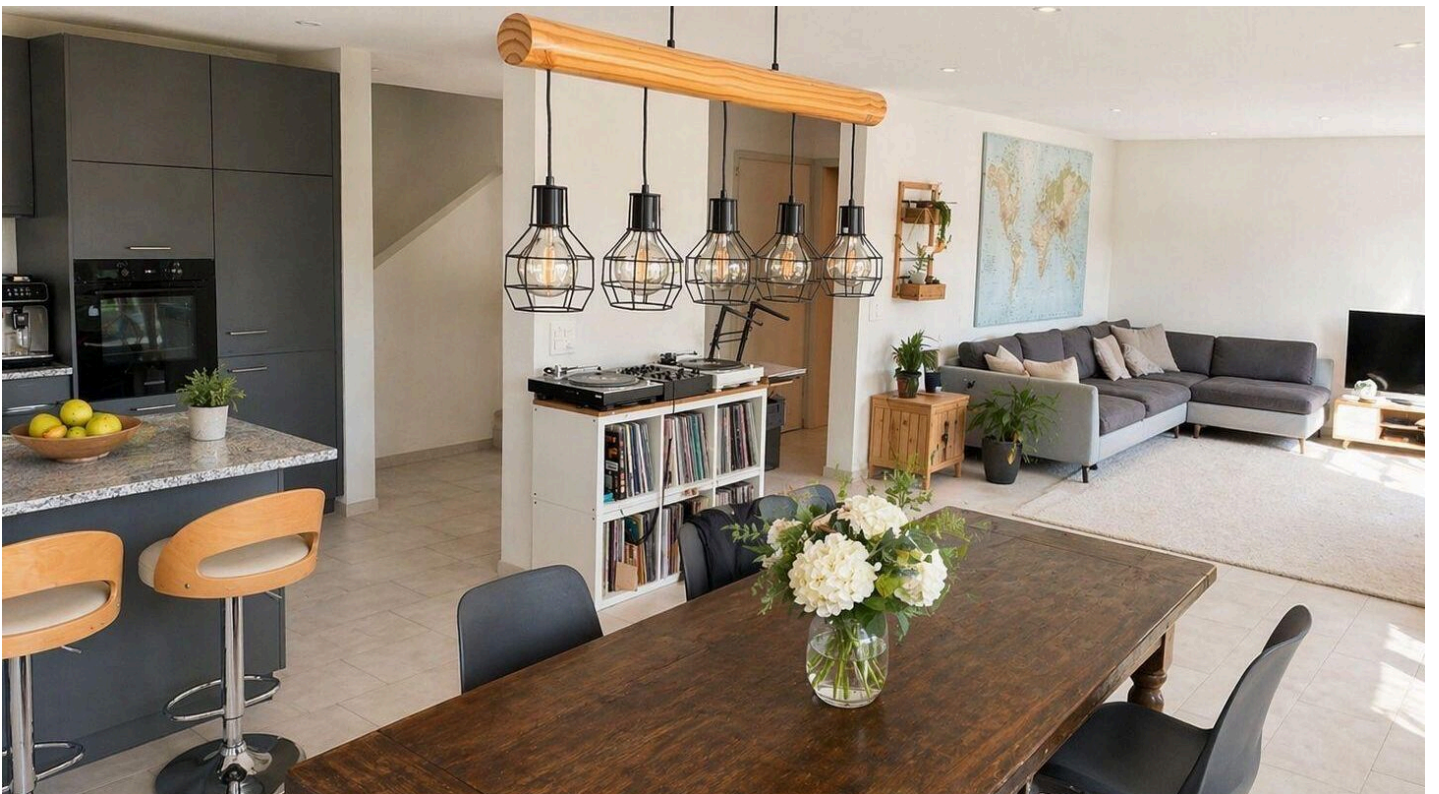
Kitchen type **Furnished kitchen, Fitted kitchen, Kitchen island**

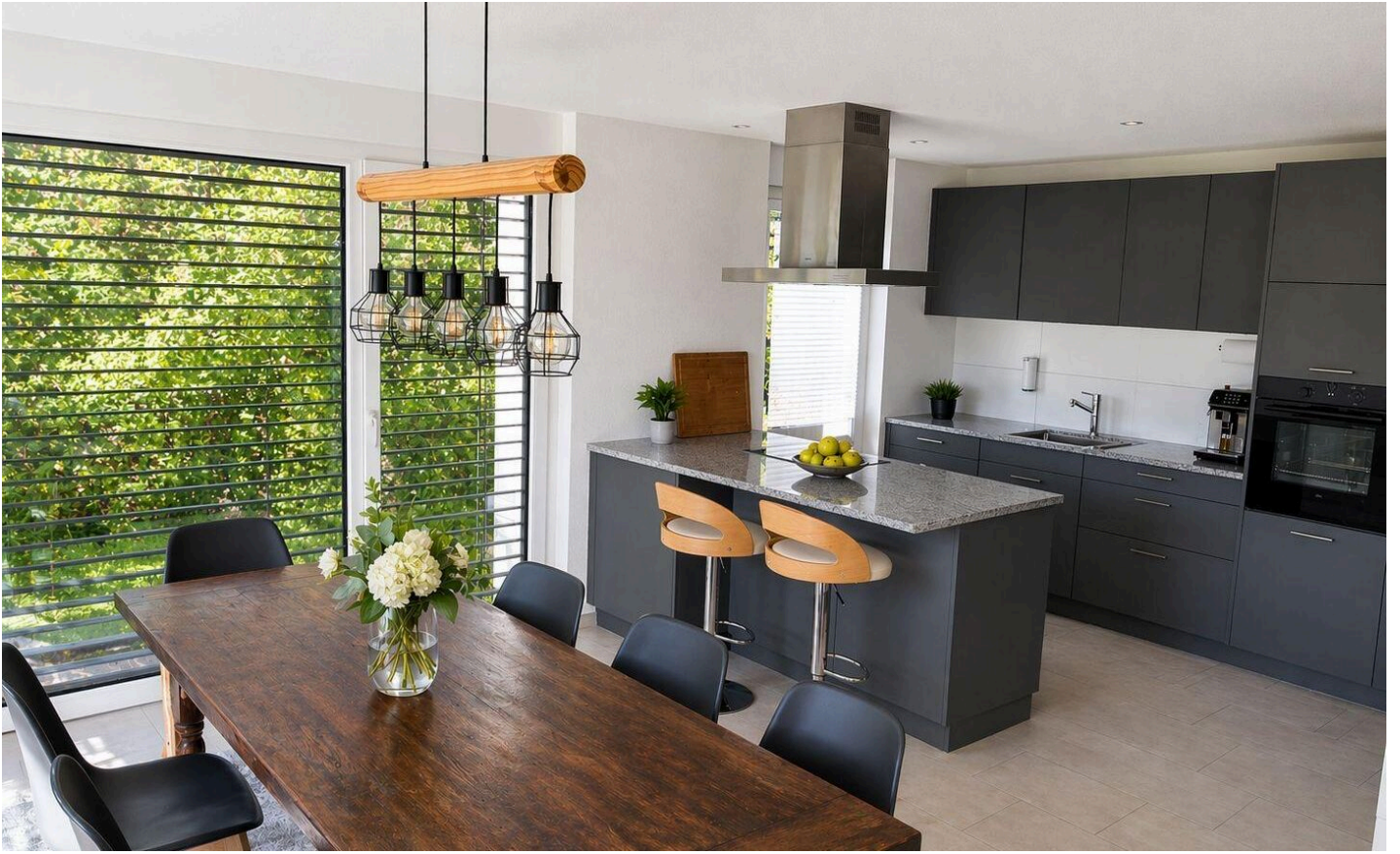
Number of toilets **3**

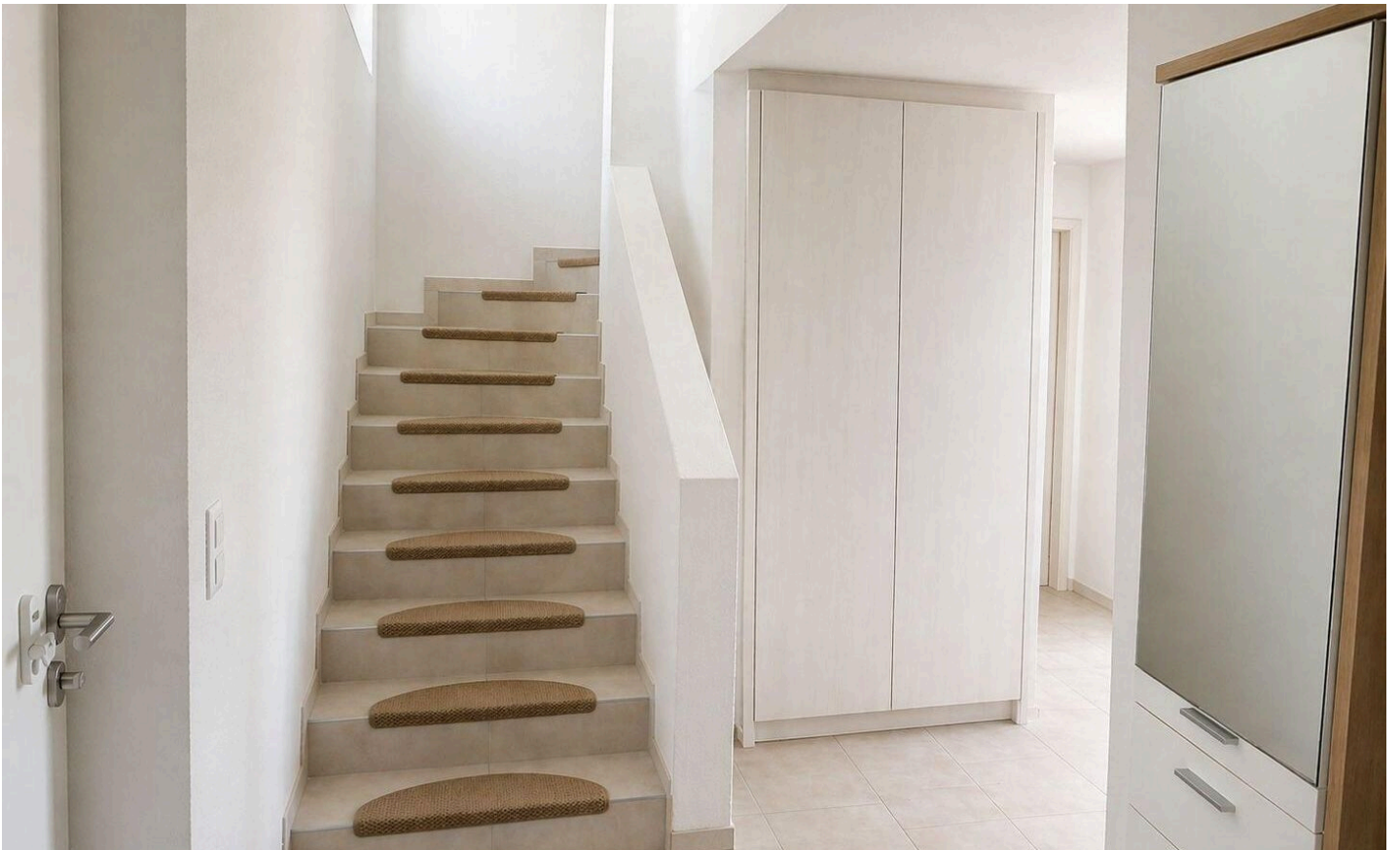
Condition of the property **As new**

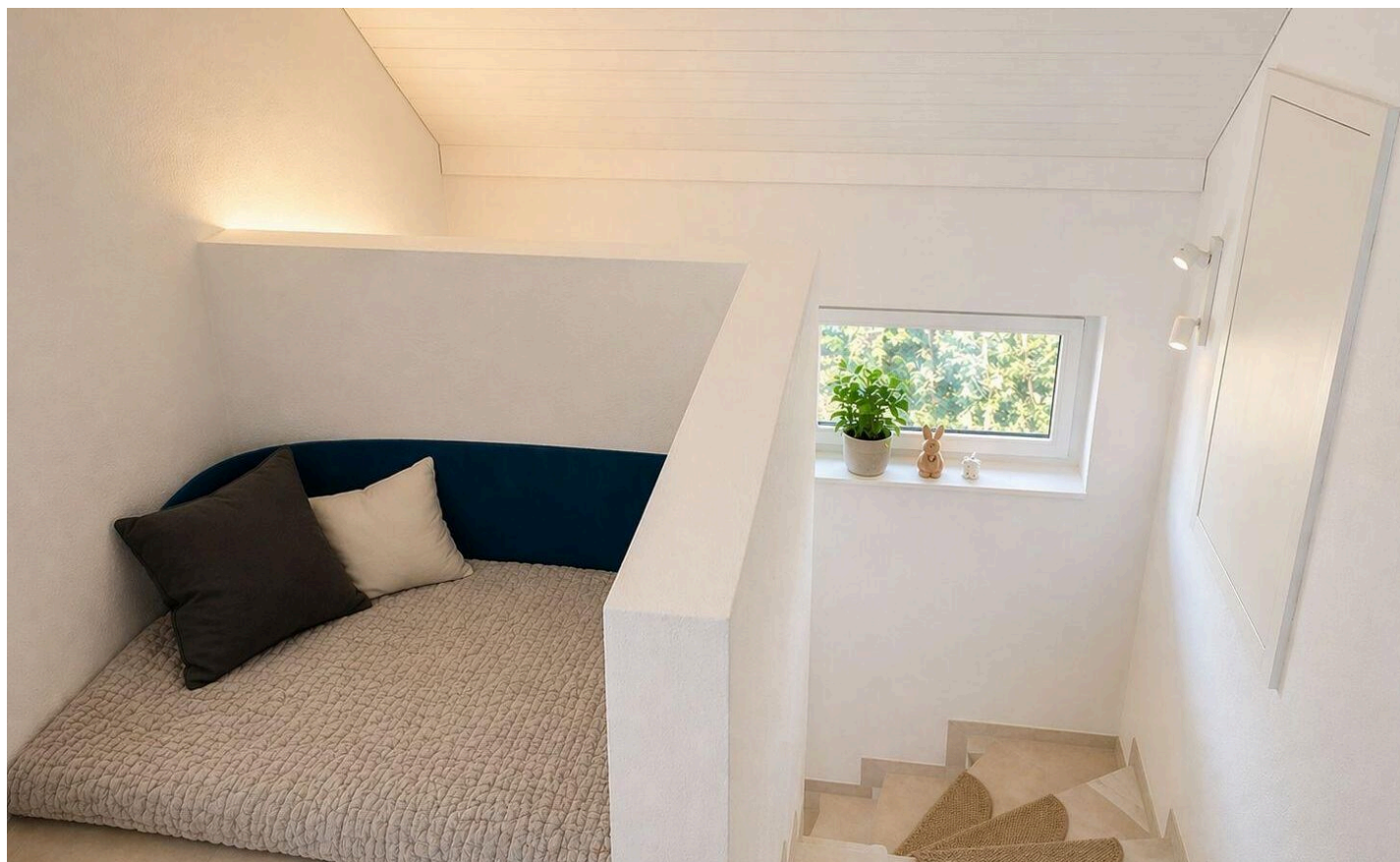


Pictures

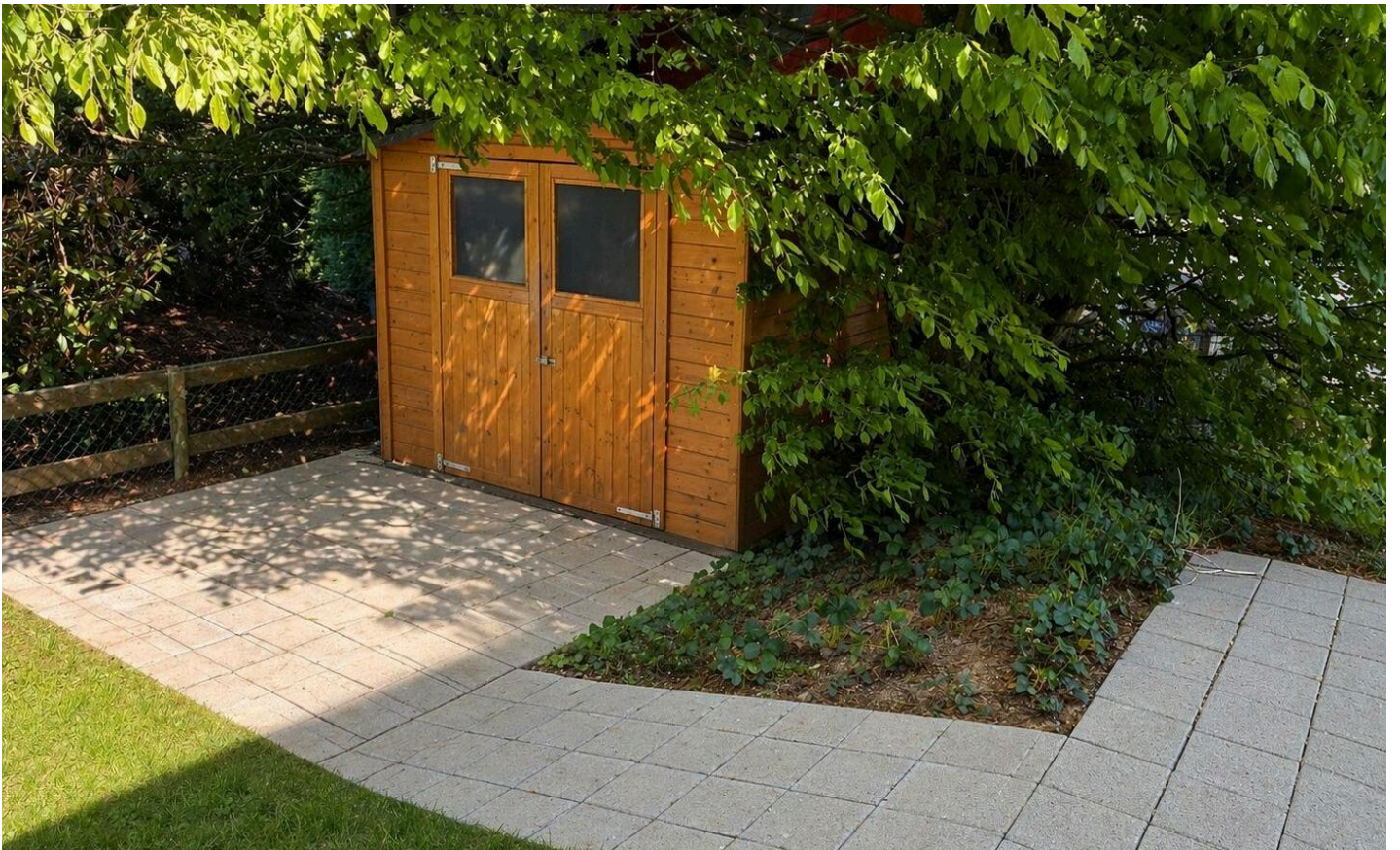






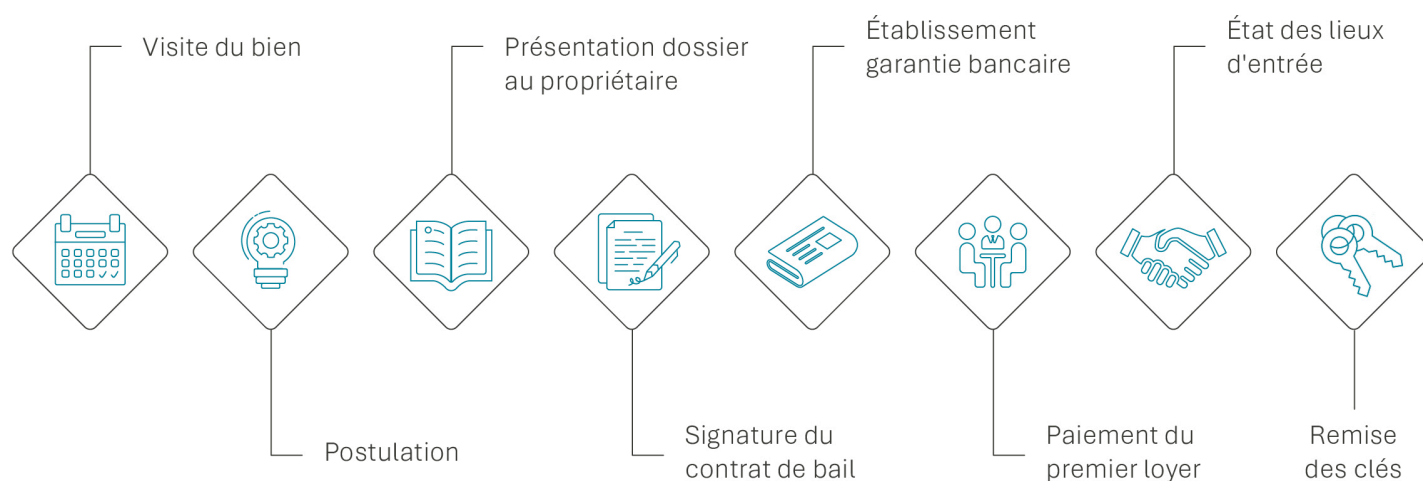








Next steps





Jennifer Aeby

T: +41 58 810 37 43

M: +41 79 123 52 45

Jennifer.Aeby@spg.ch

Société Privée de Gérance

Place de la Navigation 14

Post case 1256

1001 Lausanne