



File
for rent

Rue de la Morâche 9
1260 Nyon

spg.ch
GENÈVE-NYON-LAUSANNE



4680625

Route de St-Cergue 297
[1260 Nyon](#)



Table of contents



Characteristics	P. 3
Technical data	P. 4
Pictures	P. 5
Next steps	P. 9
Notes	P. 10



Characteristics



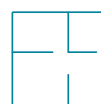
Office space
Type



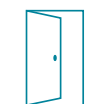
1st floor
Floor



1989
Year of construction



12
Rooms



Cellar
Annexe rooms



Cellar



1
Parking ext.

Rent : CHF 5,020.-/month



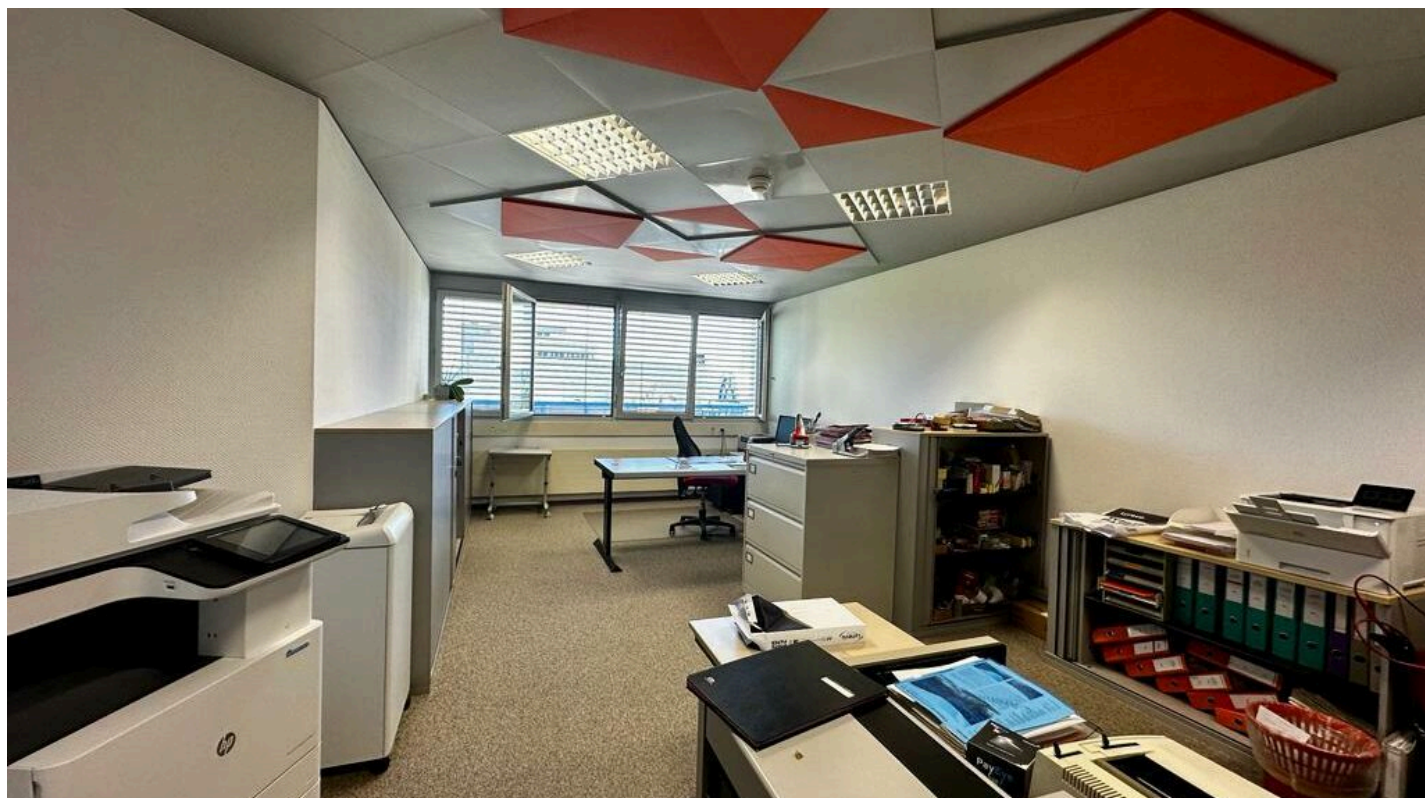
Technical data

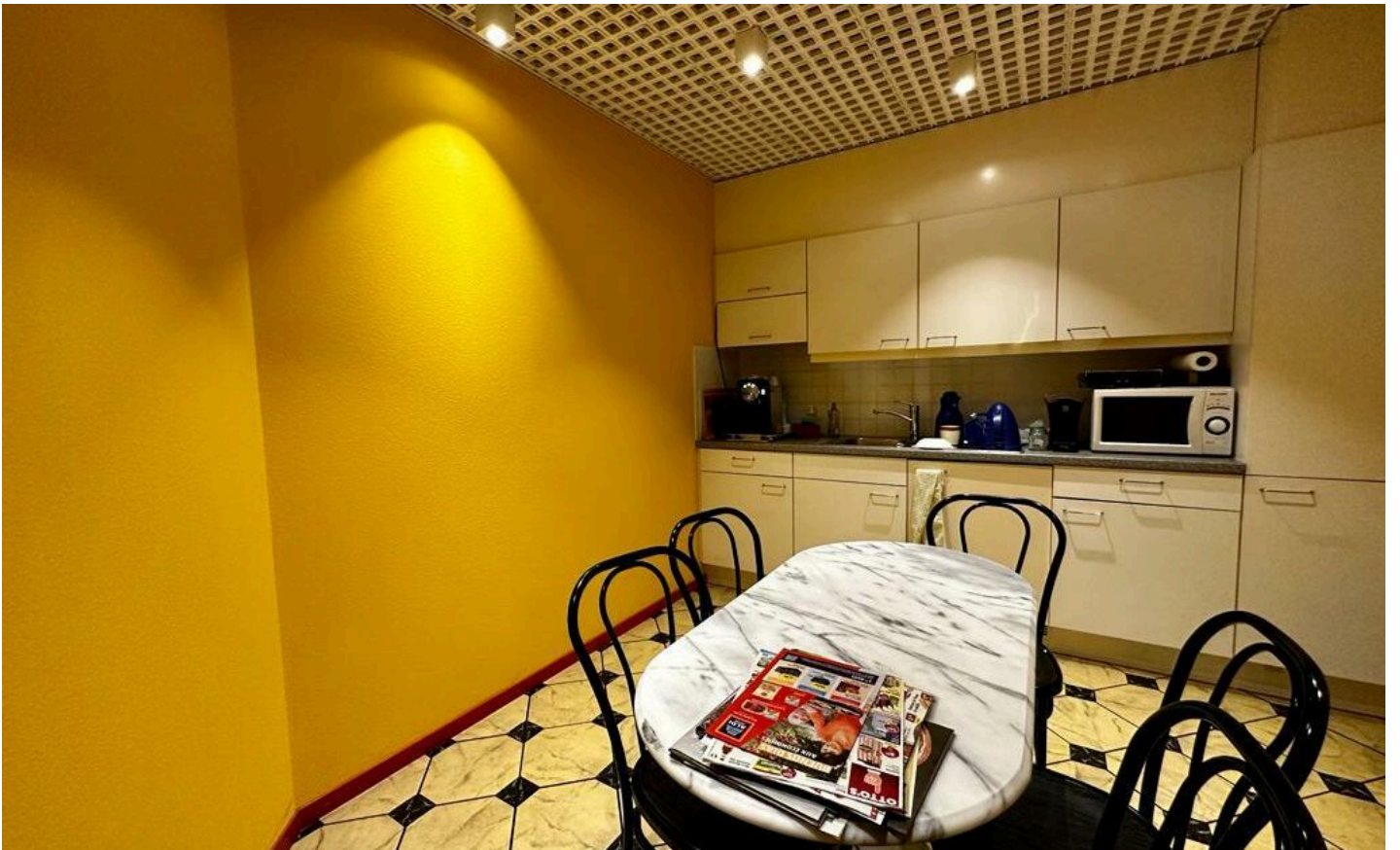
Availability

Immediate



Pictures











Next steps





Jennifer Aeby

T: +41 58 810 37 43

M: +41 79 123 52 45

Jennifer.Aeby@spg.ch

Société Privée de Gérance SA

Rue de la Morâche 9
1260 Nyon