



File
for rent

Place de la Navigation 14
Post case 1256
1001 Lausanne

spg.ch

GENÈVE-NYON-LAUSANNE

NEW



5965189

1ère ligne du Lac
1025 St-Sulpice VD



Table of contents



Characteristics	P. 3
Technical data	P. 4
Pictures	P. 5
Next steps	P. 7
Notes	P. 8



Characteristics



9

Rooms



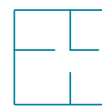
3

Bedrooms



3

Bathrooms



~ 200 m²

Living area



~ 1,164 m²

Ground surface



3

Parkings int.



1900

Year of construction



2020

Latest renovations



Fuel oil

Heating type



South, West

Orientation



Lake view

Rent : CHF 8,500.-/month

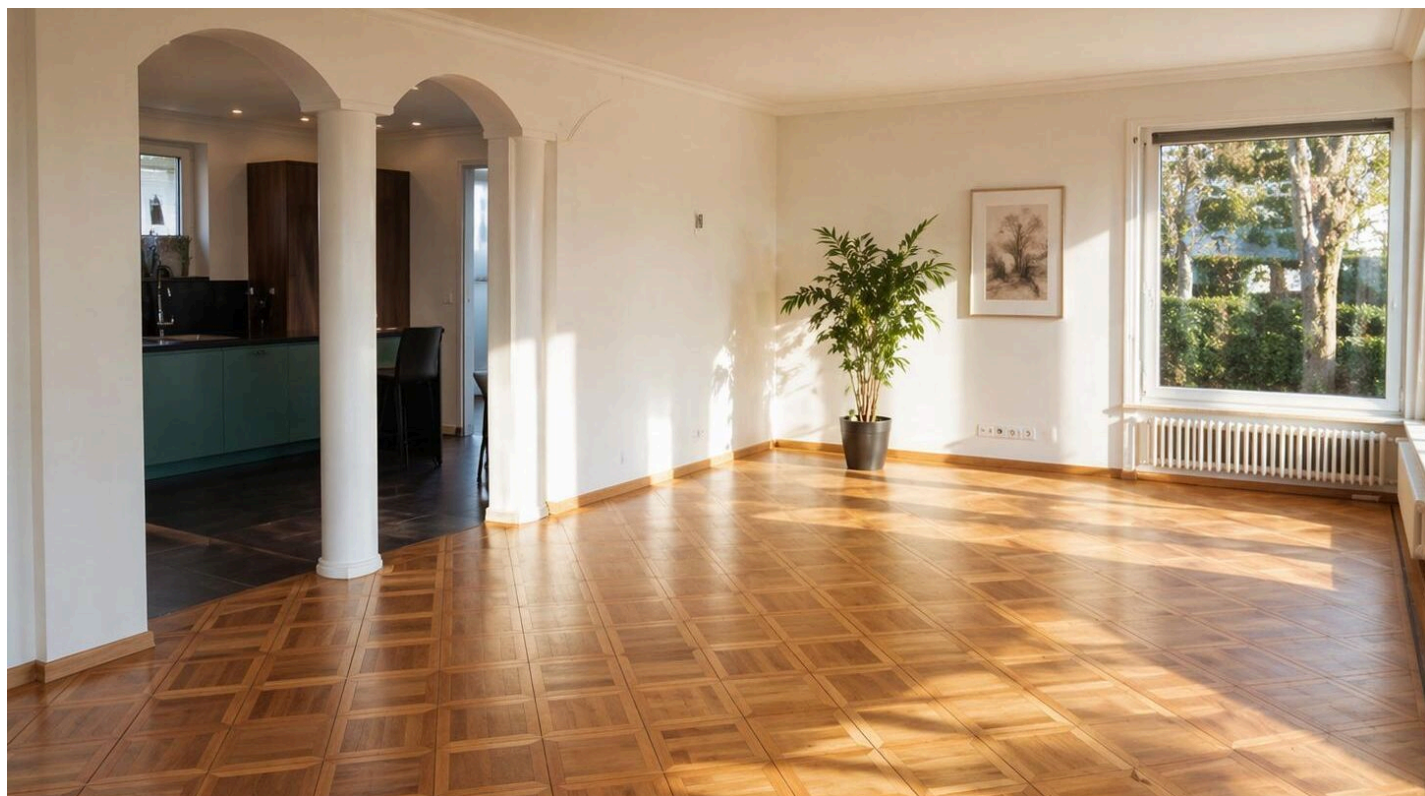


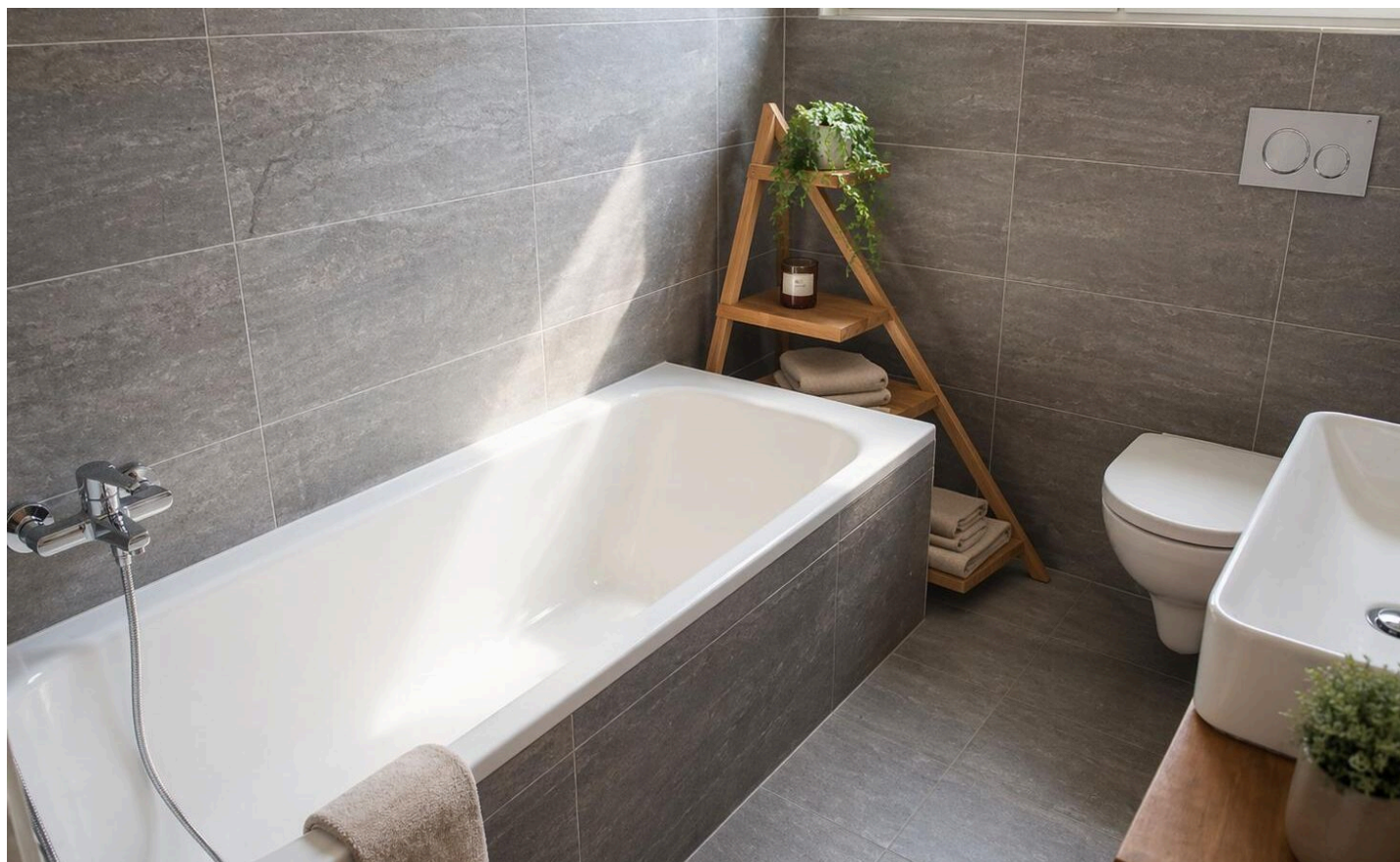
Technical data

Type	House	Annexe rooms	Workshop
Kitchen type	Fitted kitchen, Furnished kitchen	Condition of the property	Very good



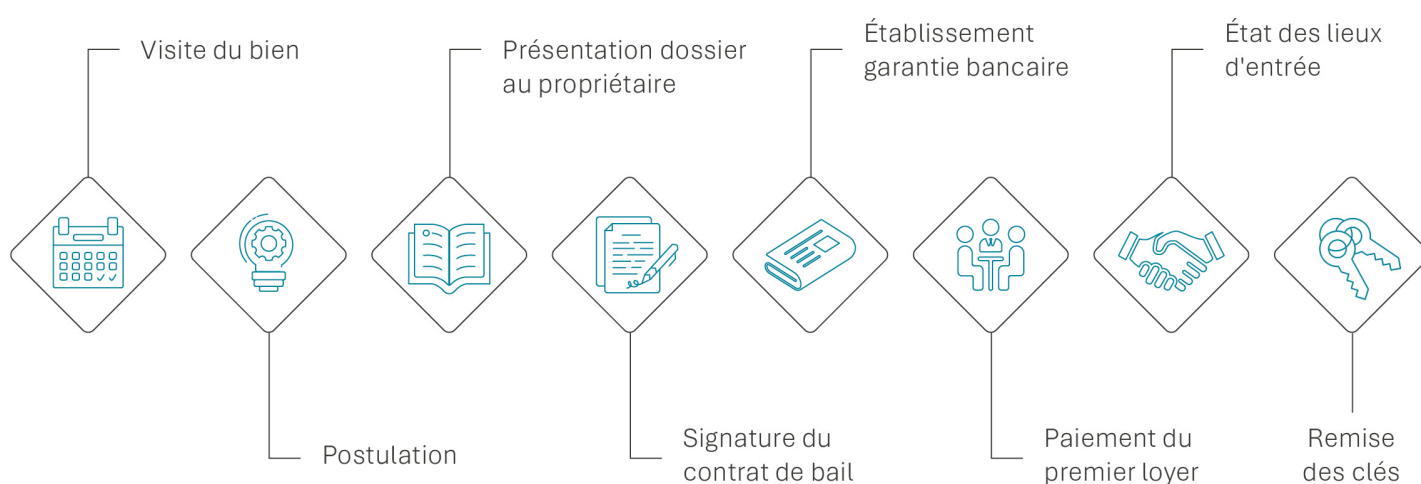
Pictures







Next steps





Jennifer Aeby

T: +41 58 810 37 43

M: +41 79 123 52 45

Jennifer.Aeby@spg.ch

Société Privée de Gérance

Place de la Navigation 14

Post case 1256

1001 Lausanne