



4680625

Route de St-Cergue 297
1260 Nyon



Inhaltsverzeichnis



Technische daten	P. 3
Technische daten	P. 4
Bilder	P. 5
Nächste schritte	P. 9
Notizen	P. 10



Technische daten



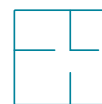
Gewerbe
Typ



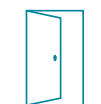
1. Stock
Etage



1989
Baujahr



12
Zimmer



Keller
Nebenräume



Keller



1
Aussenparkplatz

Mietzins : CHF 5'020.-/Monat



Technische daten

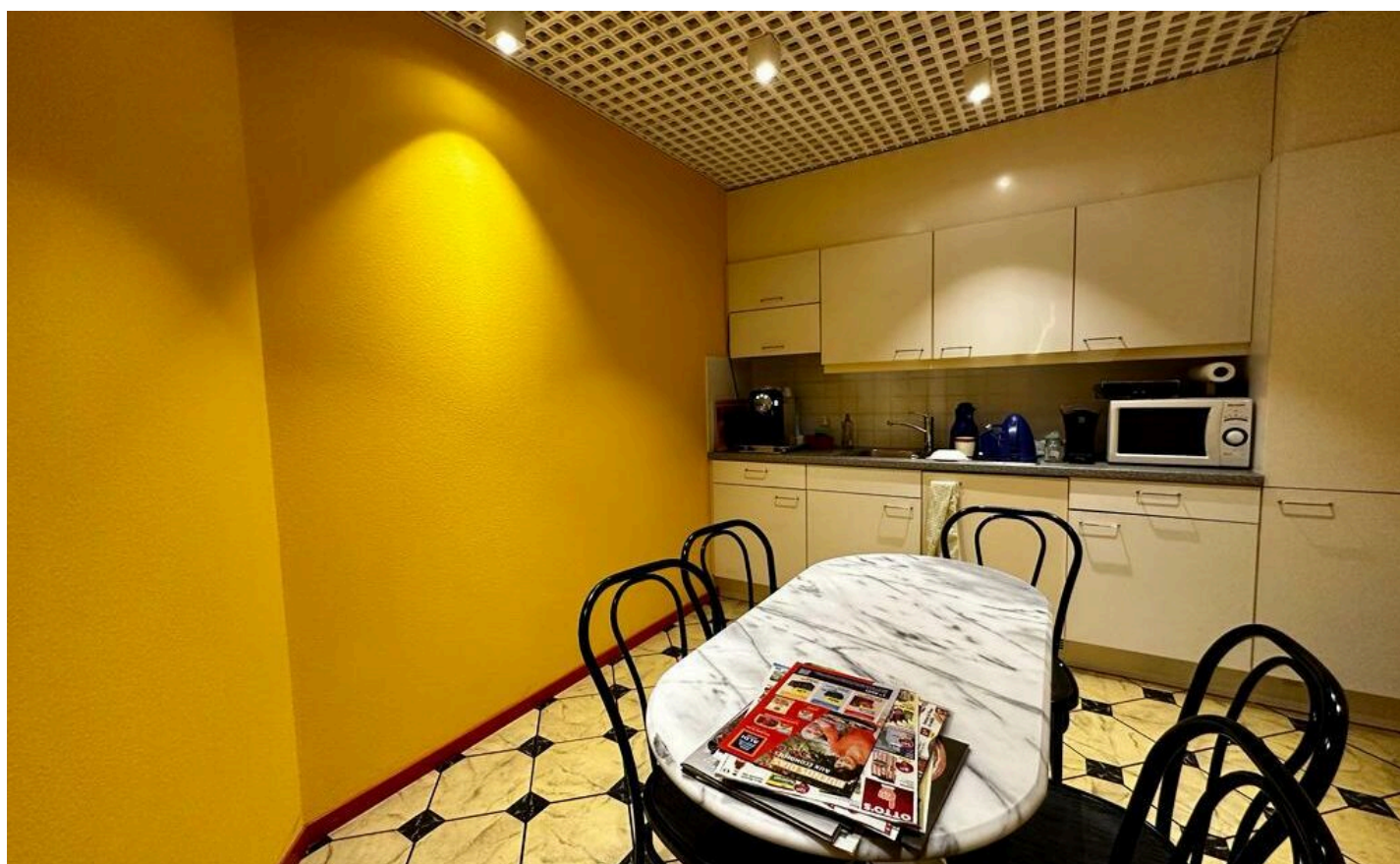
Verfügbarkeit

Sofort

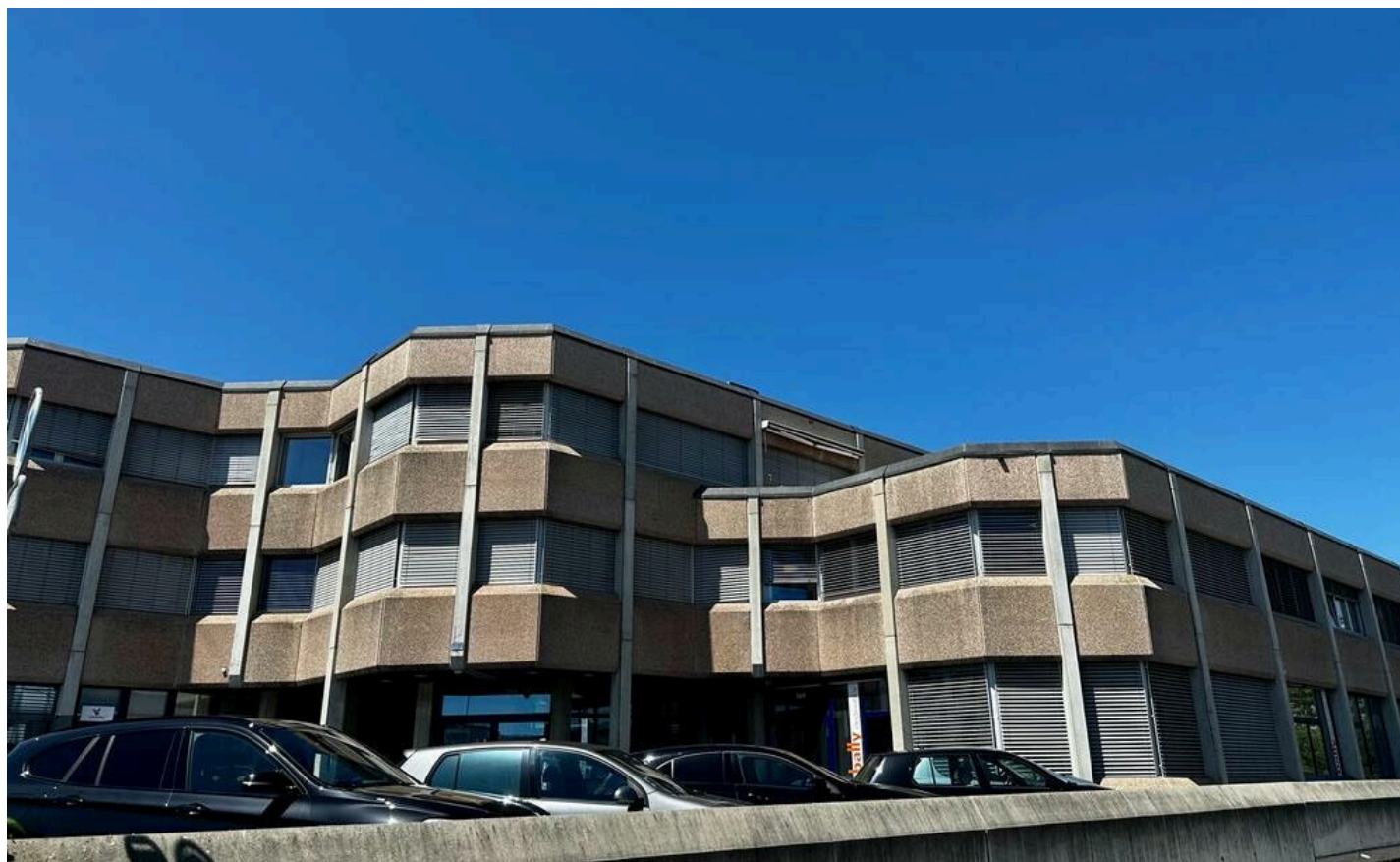


Bilder



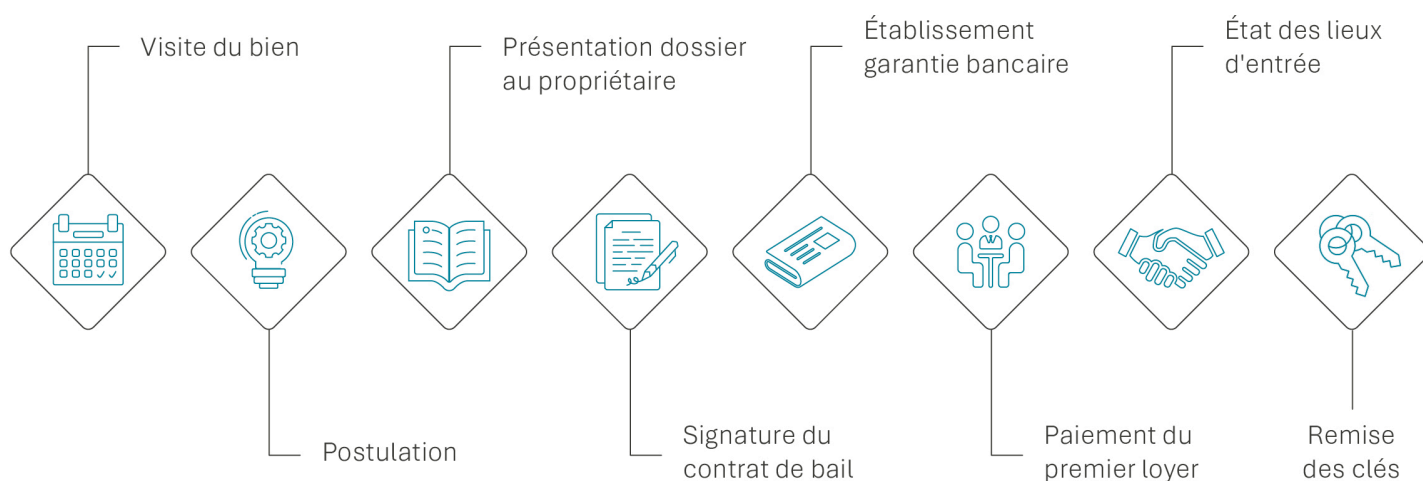








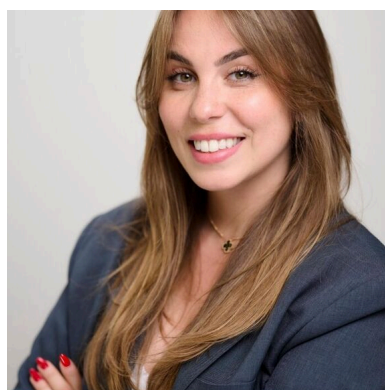
Nächste schritte





Notizen

VOTRE CONTACT



Jennifer Aeby

T: +41 58 810 37 43

M: +41 79 123 52 45

E: Jennifer.Aeby@spg.ch



Jennifer Aeby

T: +41 58 810 37 43

M: +41 79 123 52 45

Jennifer.Aeby@spg.ch

Société Privée de Gérance SA

Rue de la Morâche 9

1260 Nyon